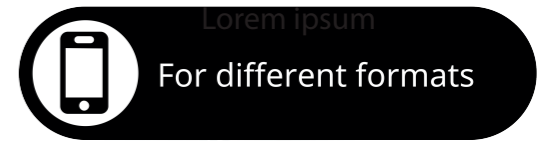


Follow us:



 **Call your Maternity Unit...**

**Immediately** if you have:



noticed your **baby's movements** slow down or stop.



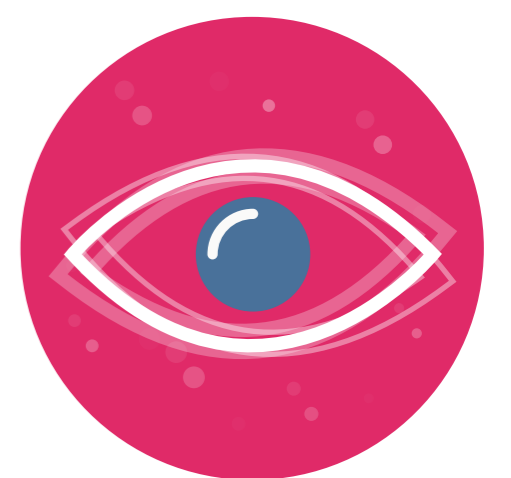
any **bleeding** or **leaking of fluid** (clear or any colour).



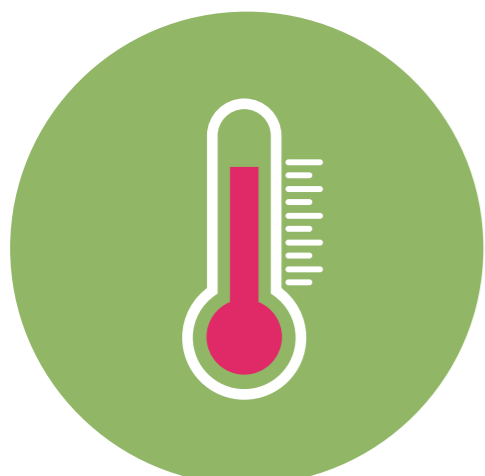
**severe pain** just below the ribs in the middle of your tummy.



obvious **swelling** of your hands and face, or upper body.



**problems with vision** (blurring, flashing lights or spots, difficulty focusing).



a high **temperature**.



a persistent **headache**.

**Within 24 hours** if you have:

- **itching** (hands/ feet or anywhere else).
- **abnormal discharge**.
- **soreness** around your vagina.



It is **NOT** true...

...that babies move less at the end of pregnancy. If you think your baby's movements have reduced, call your maternity unit straight away, no matter how many times this happens. **You should be asked in for assessment.**

